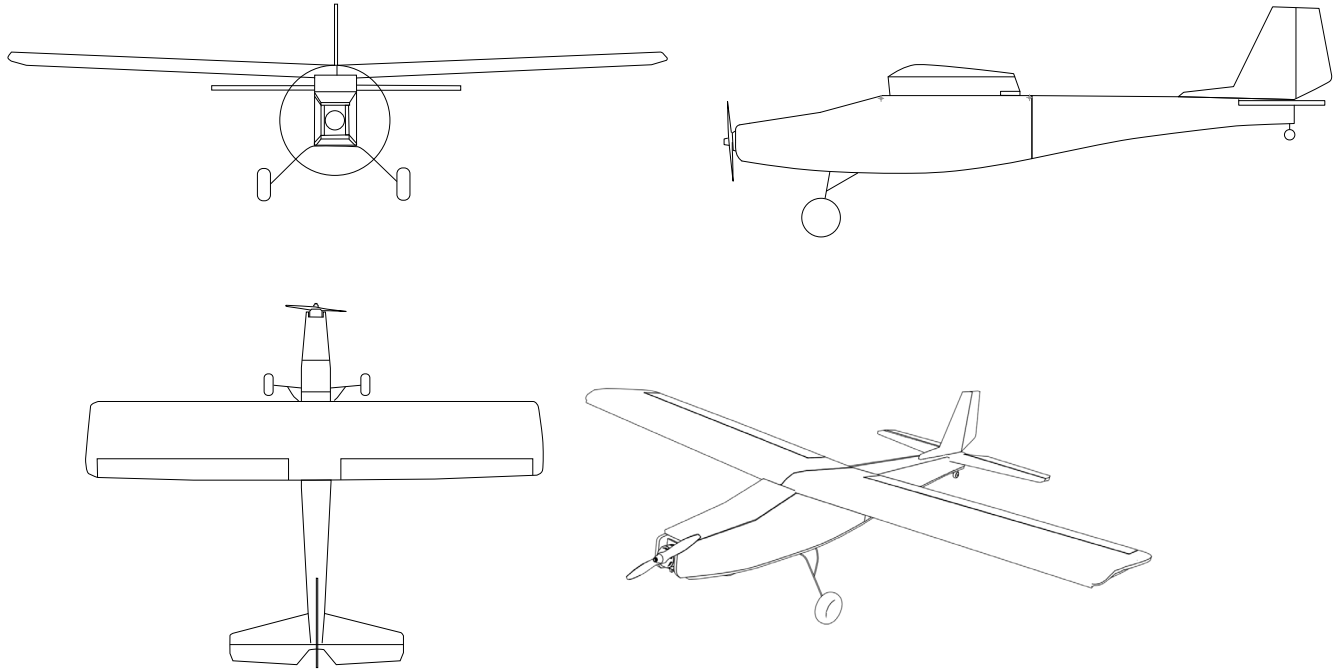


JOYTRAINER^{mini}



JOYPLANES RC

RC Trainer Airplane
1050 mm of Wingspan (41.3")
Designed by Joyvel Osorio.



Technical data:

Number of channels: 4, Ailerons, elevator, rudder and throttle.

Size: 1050mm wing span and 720mm long.

Average maximum weight without battery: 560g - Maximum allowable weight with battery: 860g

Material: 5mm thick foam board.

Landing gear: 2mm steel wire and wheels from 50mm to 80mm in diameter.

2206 or similar motor with 1600KV - 2600KV.

5 " - 7" propeller (use the one recommended by the motor manufacturer).

Recommended battery for beginners and stable flights: 2S from 2200 - 4000 mAh. (Do not fly on windy days with this configuration).

For more power: 3S from 1500 - 3200 mAh. (You can fly on a bit windy days and do maneuvers).

For the construction, use 2 sheets of 5mm foam board size A1 or 3 sheets of size A2, you can use a similar material such as XPS foam.

Recommended glue: Hot glue gun. Other glues work too, avoid using aggressive glues with foam like CA.

Control surfaces rates:

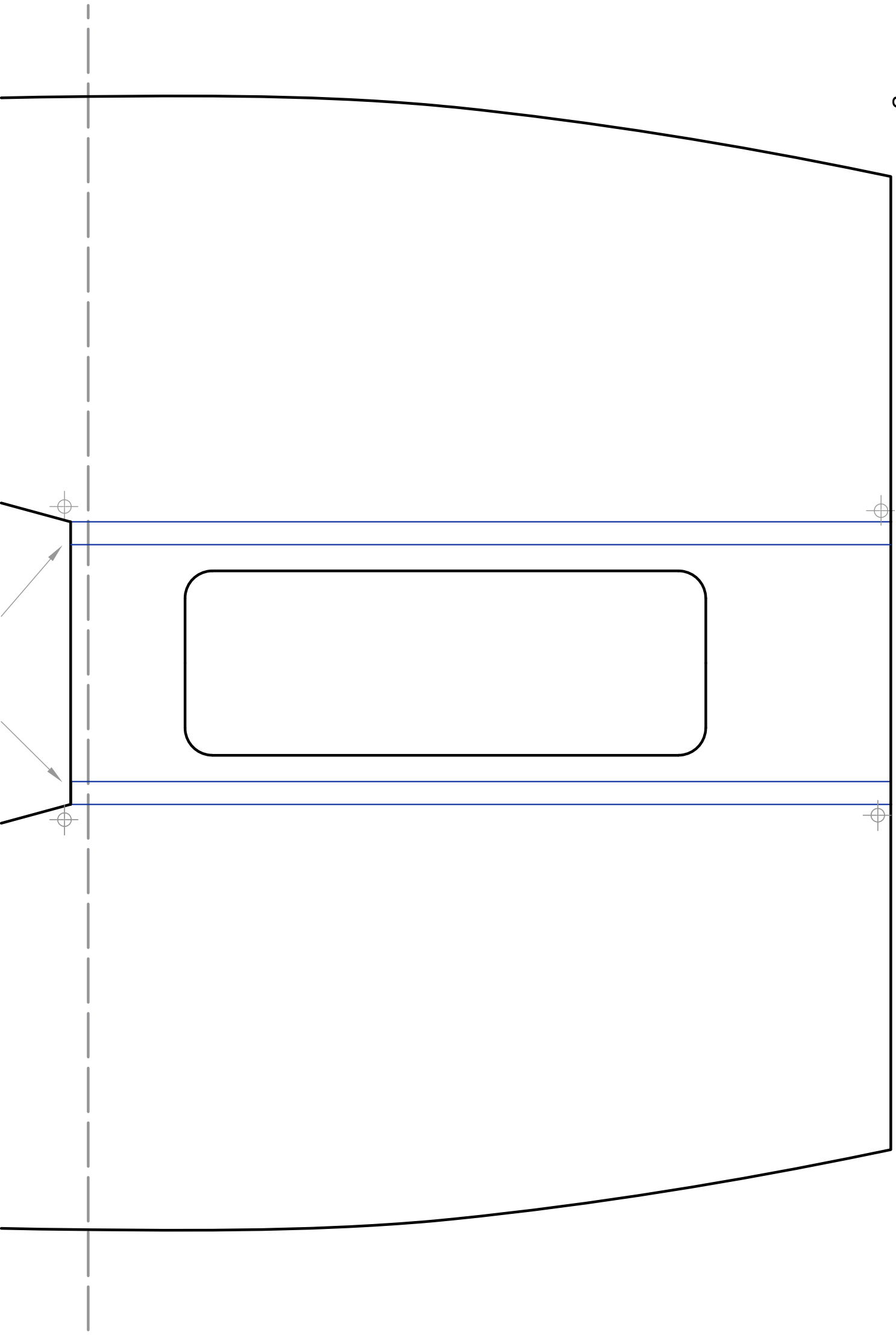
Ailerons 17mm up and down.

Elevator 20mm up and down.

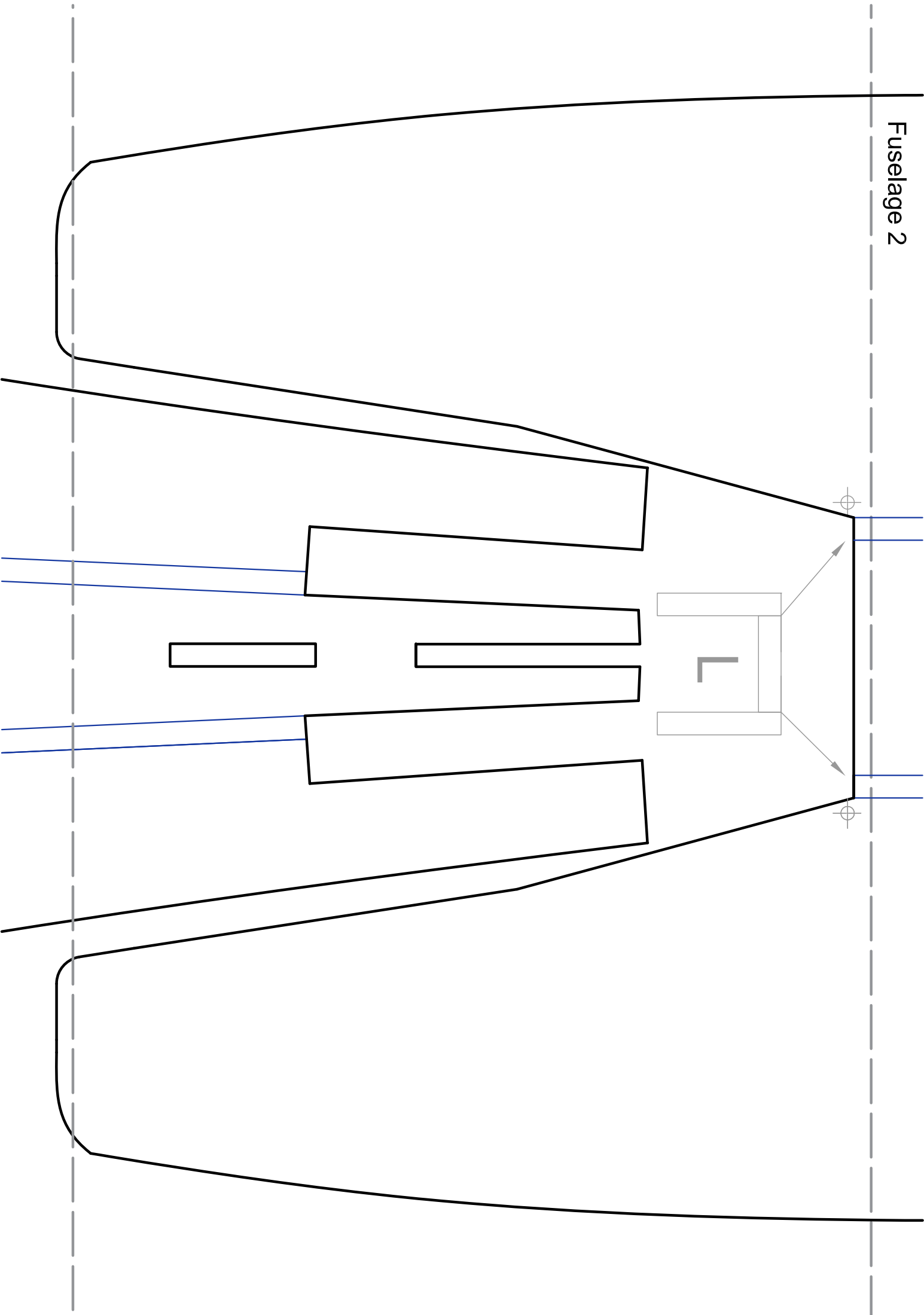
Rudder 25mm up and down.

Use exponential of 70% in ailerons.

Fuselage 1

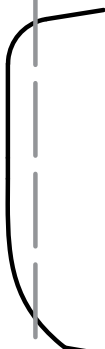
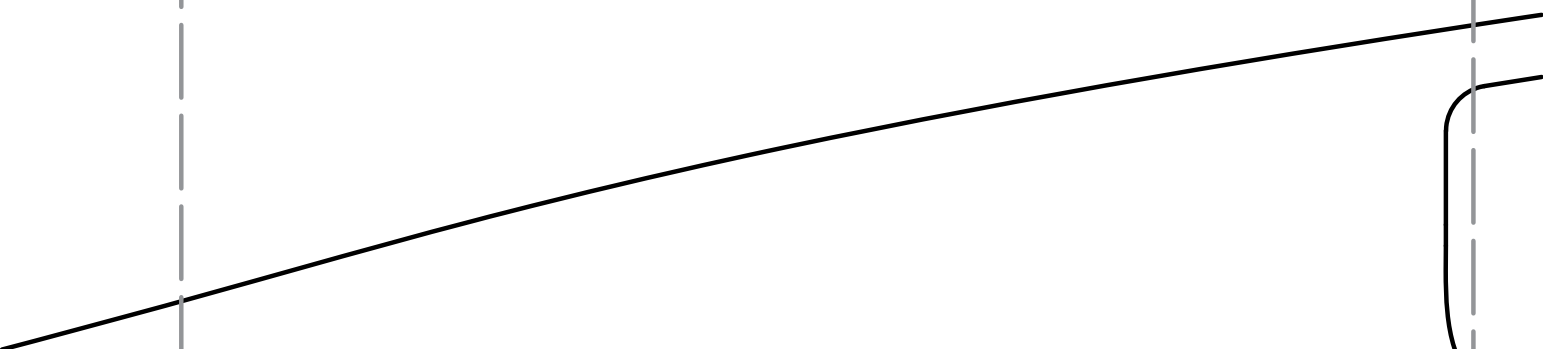
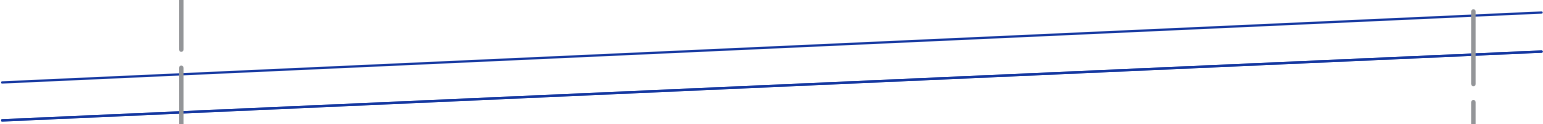
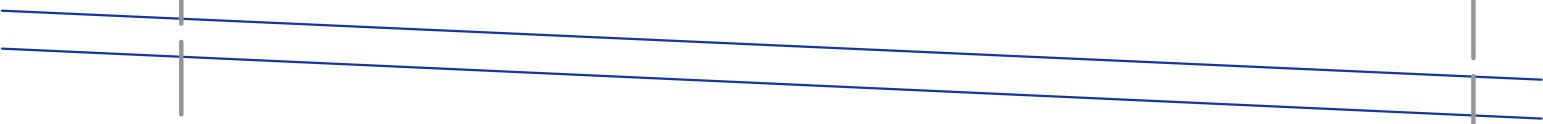
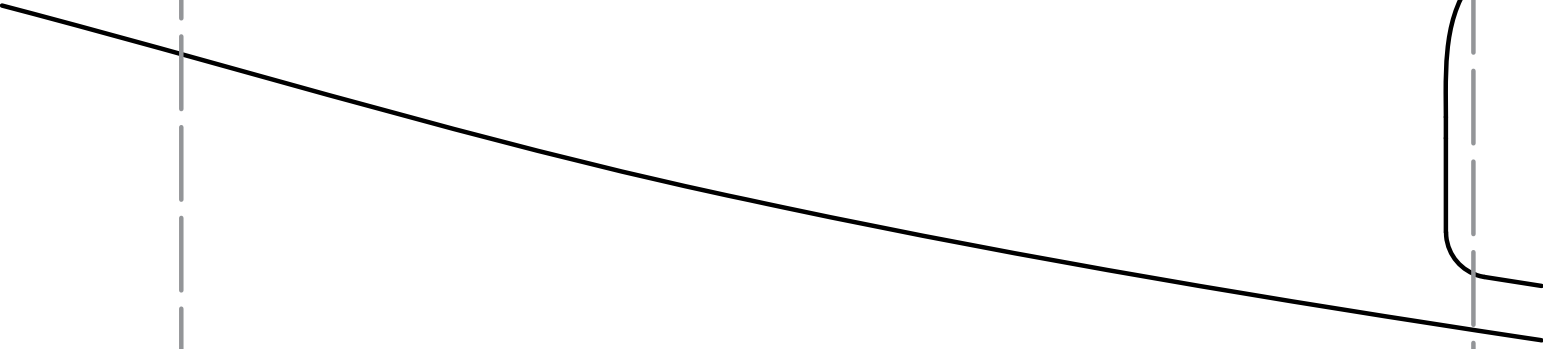


Fuselage 2

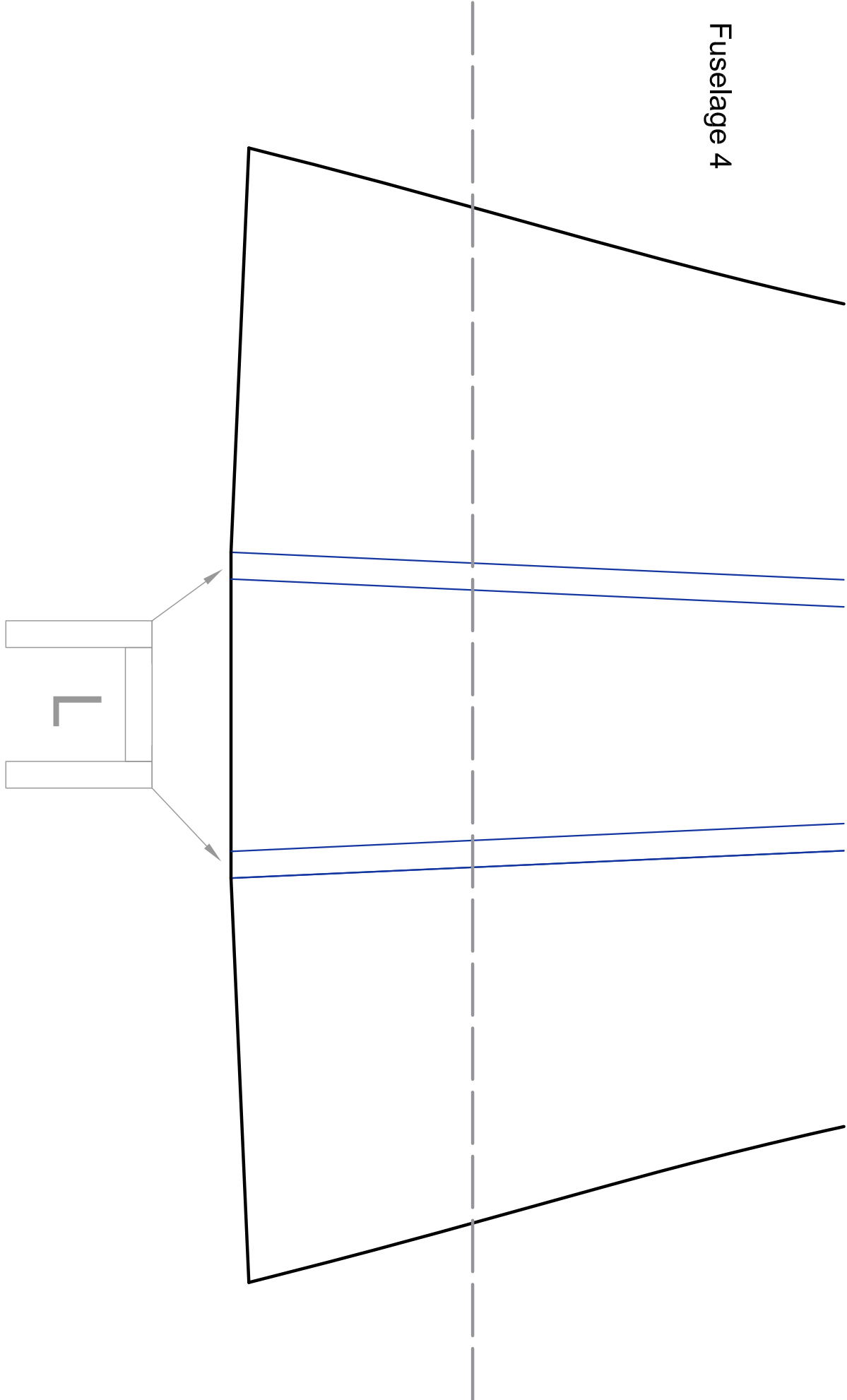


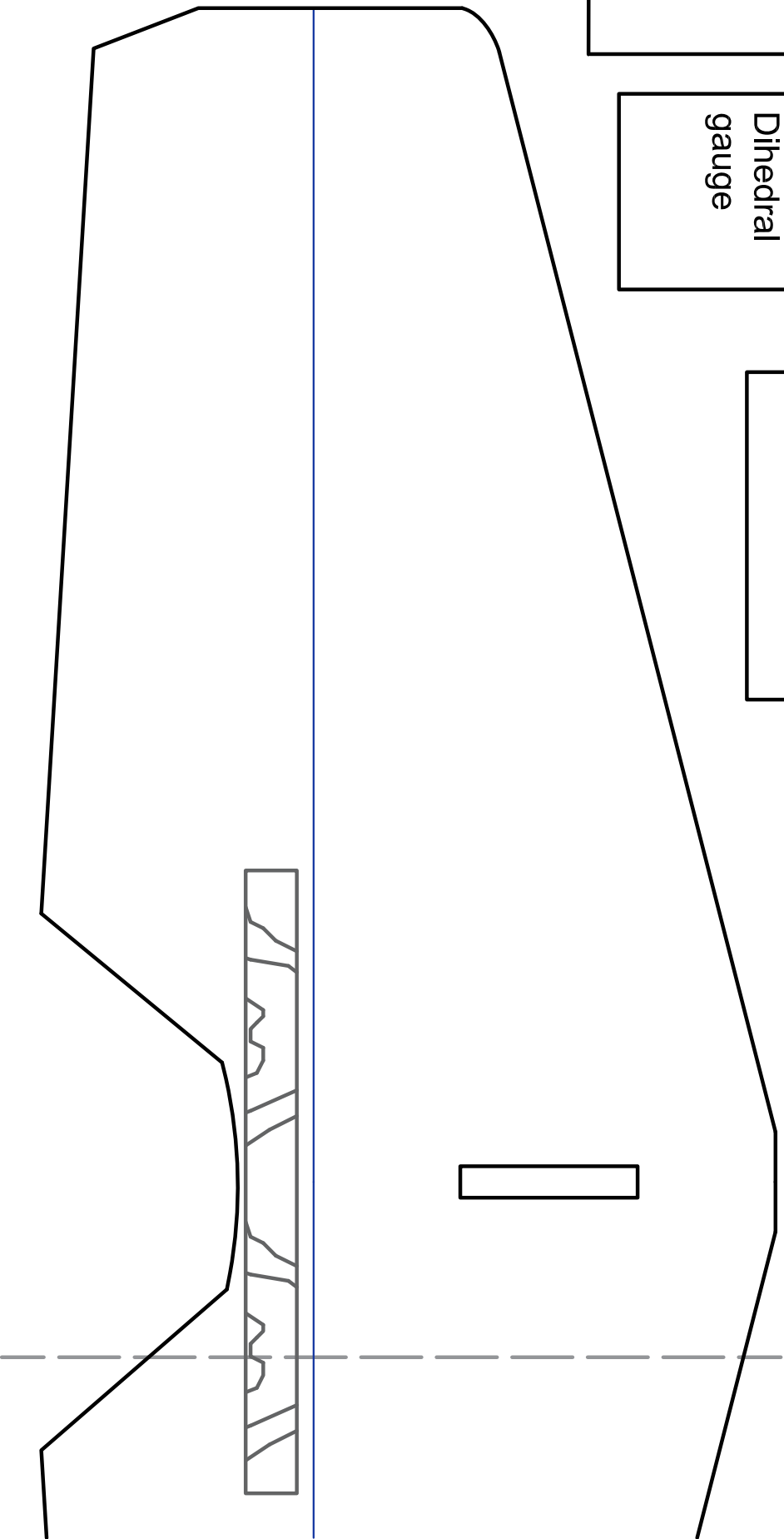
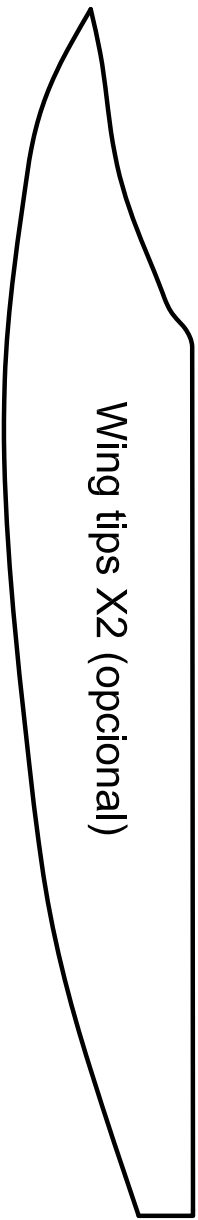
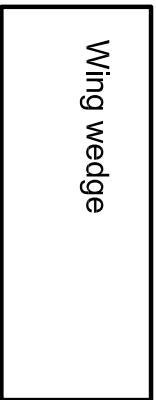
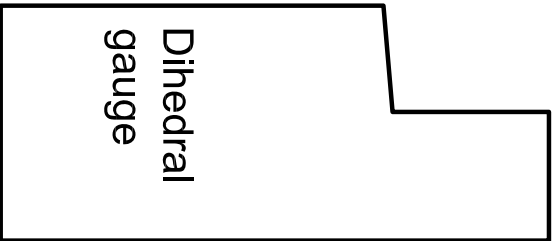
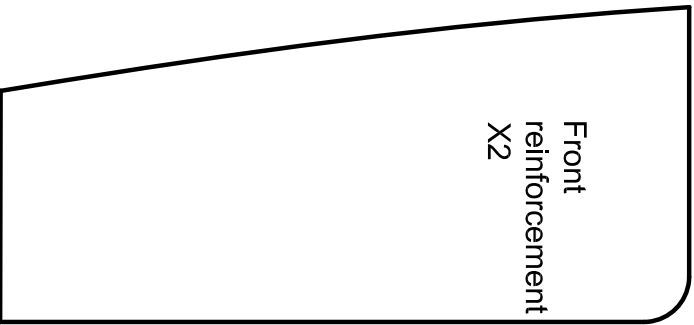


Fuselage 3

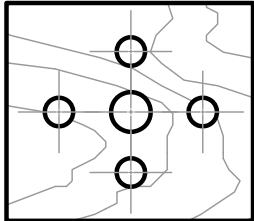
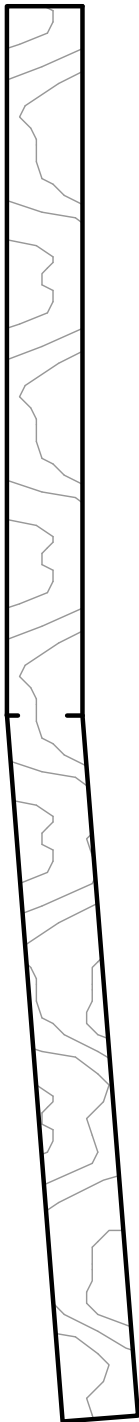


Fuselage 4

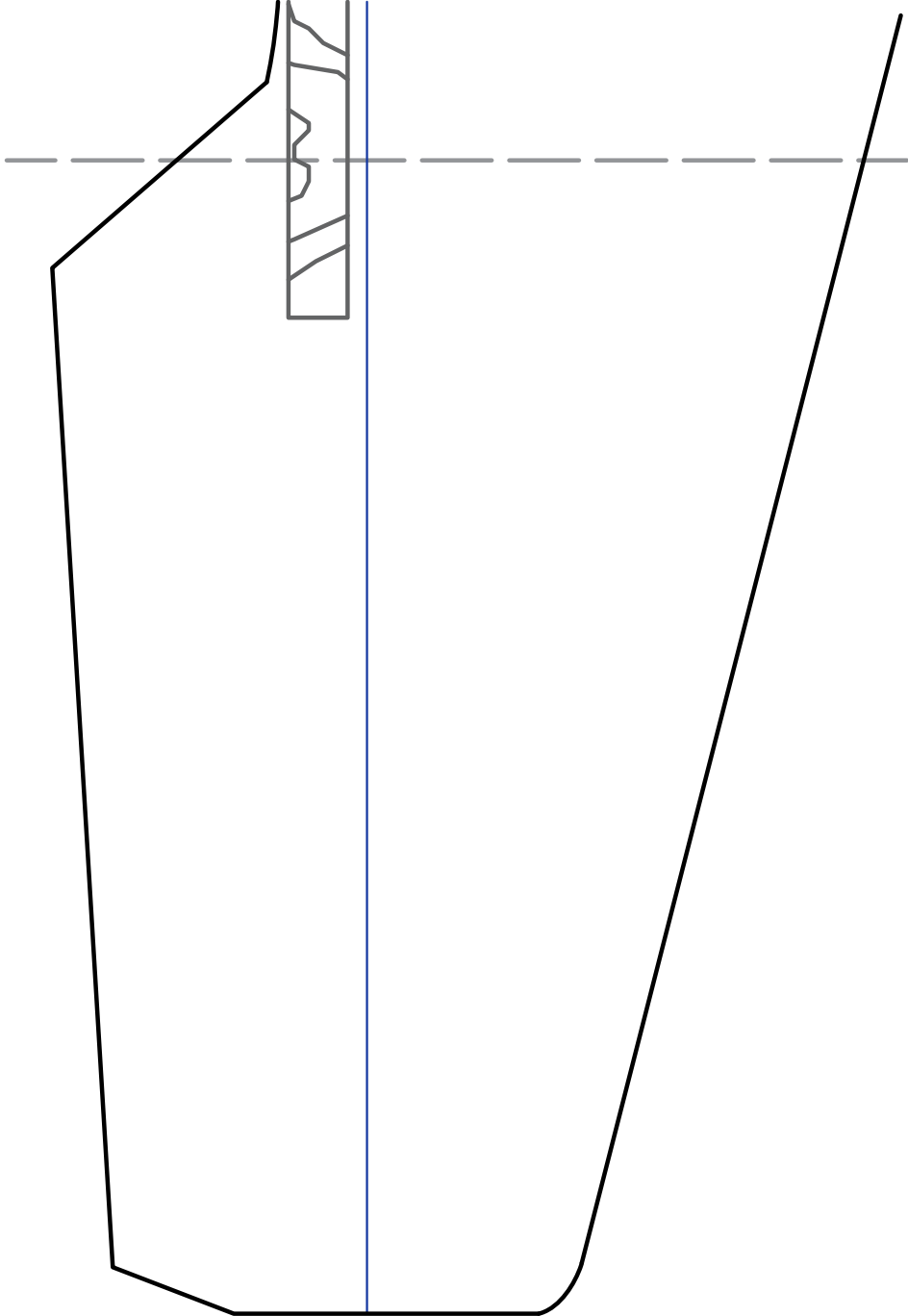




Central spar (plywood) 3-5mm



Motor base (Plywood 3-5mm)



Landing gear base (plywood 3-5mm)

